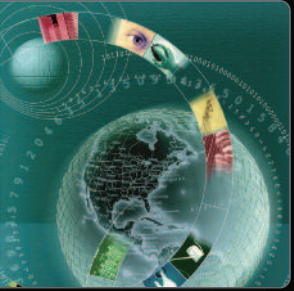


PLATINUM DR



Your Practice. Your Preference.
Your Productivity Solution.



PLATINUM DR

superior image quality
and patient care



COMPLETE PLATINUM DR SYSTEM

Enhanced Workflow with Multiple Applications

Viztek's Platinum Fluoro/DR system caters to a broad spectrum of patients with both true static digital radiography and real time dynamic fluoroscopy.

The Platinum unit is ideal for many different exam rooms and for most types of exams. It is designed to maintain the comfort of the patient, while also helping to reduce dose, with advanced image enhancement software.

Expand your current customer base with the dual function system that provides x-ray images within five seconds of acquisition and fluoroscopy with up to 30 frames per second.

The system features fast positioning with table mechanics that intuitively connect to the patients in the worklist. After selecting the patient, the table will automatically position for the specific study that the patient is scheduled for.

Features such as SID, grid, generator settings, image enhancement filters, and table and tube positions are all tied to one another. This helps to save time on adjusting settings and assists in dose reduction.

Unrivalled Table Movement for Ease of Positioning

The Platinum, state-of-the-art system features a remote controlled table allowing for an enormous range of applications. The table lowers to just under 19 inches making transfer, positioning, and imaging for limited-mobility patients easy, comfortable, and safe.

The table holds up to 584 lbs and measures just over 33 inches wide. The system design accommodates access to the patient all the way around the table.

With +/-90 degrees movement in either direction, the motorized tilting table is adaptable for various procedures and has an SID of 42 to 70 inches.

The anti-collision feature with synchronized movements is standard for easy and safe positioning.



PLATINUM SYSTEM

Console

The control console features a 10 inch touch screen that manages a centralized, efficient workflow. The PC-based console controls the table movements and the generator settings and offers safety functionalities that prevent unintentional movement, keeping patients from moving unnecessarily.

Panel

The Platinum dual purpose systems uses a dynamic Trixell 17x17 that brings together high resolution static DR images and high frame-rate fluoroscopy in the same machine.

A pulsed fluoroscopy functionality allows for optimizing lower dose and reducing radiation up to 90%. The resolution is up to 3.4 lp/mm.



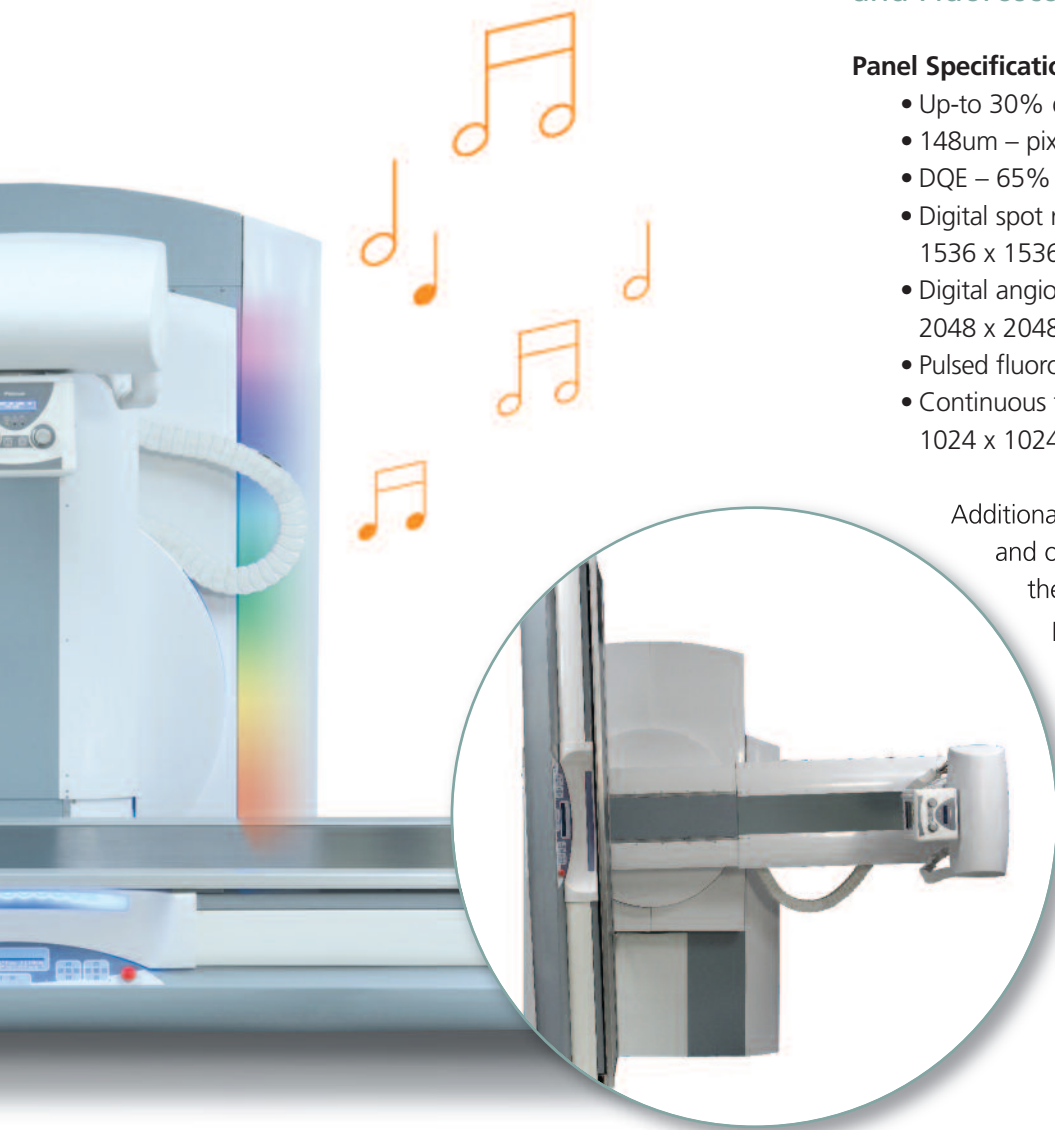
PLATINUM PATIENT TRANSFER

Premium System for the Best in DR Imaging and Fluoroscopy Functionality

Panel Specifications

- Up-to 30% dose reduction
- 148um – pixel size
- DQE – 65% at 1uG
- Digital spot rad up to 10fps with 1536 x 1536 @16 bits
- Digital angiography up to 3.75 fps with 2048 x 2048 @16 bits
- Pulsed fluoro – up to 15 fps @14 bits
- Continuous fluoro – up to 30 fps with 1024 x 1024 @14 bits

Additional system features include ambient lights and optional music. A camera also sits inside the collimator which allows for constant patient visibility and assists in radiation-free patient positioning. The system is complete with a comprehensive reject analysis that records each patient's images, including those not used for diagnostic purposes. The dynamic machine is designed to maintain patient comfort and also offers a pediatric-specific program for imaging children.



PLATINUM DR features and benefits

System Options

- Additional control console
- Double pedal
- Automatic injector
- Stitching
- Wireless detector
- Overhead tube crane
- Digital real-time subtraction
- Angiography package
- Tomography
- DAP

Applications

- Spine
- Extremity
- Lungs
- Gastroenterology
- Urology
- Angiography
- Fluoroscopy



CONTROL PANEL



2217 U.S. Highway 70 East • Garner, NC 27529 • Phone: 800.366.5343
Email: info@viztek.net • www.viztek.net